

MMplot Index 1 of 2

Documentation for MMPlot View & Print Utility 16.06
Windows Plotfile Viewer (HPGL und HPGL-2)
by MAMAVISION Software Consult
May 1996



General

[System requirements](#)
[List of files](#)
[Uninstall](#)
[Program description](#)
[Viewer Commands](#)
[Support](#)

Keyboard

[Shortcuts](#)

Settings

[Infiles](#)
[Desktop](#)
[Pens](#)
[Ports](#)
[Print](#)
[About](#)

MMPlot Index 2 of 2

Supported Language HP/GL-2

[General](#)
[Configuration-&status group](#)
[Vector group](#)
[Polygon group](#)
[Line & fill attributes group](#)
[Character group instructions](#)
[Technical graphics extension](#)
[Palette extension](#)
[Miscellaneous](#)

Licence

[Agreement](#)
[Registration](#)
[Support](#)

Windows is a registered trademark of Microsoft Corp.
AutoCAD is a registered trademark of Autodesk Corp.

The Index covers all topics of this documentation. Part 1 covers the programs description, in Part 2 are infos about the most important HPGL-commands and some licence stuff.

System Requirements

This program runs on IBM PC,XT,AT,PS/2,Value-Point computers with 80386 CPU or above with 1 MB of RAM, VGA-Video, DOS/Win3.1 and a mouse

It was thoroughly tested under Win3.x, Windows 95 and WinNT.

List of files

File	Description
MMPLOT.HLP	Software Documentation (this file).
MMPLOT.EXE	Viewer
MMPLOT.REG	Registration form.
MMPLOT16.DLL	DLL required from MMPLOT.EXE
SAMPLE.PLT	Demo-Plotfile.
MMPLOT.INI	will be created in your WINDOWS directoy

Uninstall

Mmplot will **not** change system files as Win.ini or System.ini

Normally all files of the MMPlot-package are copied to one directory and run from there. To uninstall the user just has to delete this directory.

MMPlot.INI will be generated automatically in this directory, in case of a network licence. All other configurations create MMPlot.INI in the Windows directory.

Eventually one of the DLLs (or both) were copied manually into the Windows or Windows\System directory.

On startup with a custom [INI-file](#) this will be generated automatically, if it doesnt exist. So please search your plotdata directories for inifiles, if you used that option.

Program description

MMPlot is a utility to view and print plotfiles that use the Hewlett Packard-Graphic Language/2 (this includes the former HP-GL).

The use of MMPlot is very easy.

You can specify plotfilename and/or inifilename as commandline options, for example:

[mmplot.exe sample.plt sample.ini](#)

If you do not specify a special inifile, mmplot.ini will be used.

Files

File|Save As.. saves the (active) Picture as Bitmap, Windows Meta File or MMPlot Metafile.

File|Copy will copy as Bitmap or Windows Meta File to Clipboard.

File|Email (32bit version only) will attach Bitmap, Windows Meta File (Aldus), Enhanced Metafile or original plotfile to a mail message and open the Send-Mailmessage-Dialog.

Views

The Orientation can be controlled at View|Rotation

"Zoom in", "Zoom out" and "Zoom all" are available, also a Pan function. The arrow-keys move the picture into the arrows-direction. The plot is initially shown in isotropic-mode, you can switch to anisotropic.

Output

File|Hardcopy sends the contents of the window to your printer, Print 1:N will print the plot in original scale on the actual windows printer. Zoom to Print and Print to Scale is implemented via the GDI.

The best way to reproduce the original output is - of course - file|send to plotter, if the connected printer or plotter is capable of HPGL. Please set the appropriate port options in the settings menu first.

You can retrieve some information about the plotfile at the menu [Info|Plot](#).

In the [Settings](#) dialog some aspects of the plot can be adjusted like pen colors, widths, startup settings, scaling factor and much more.

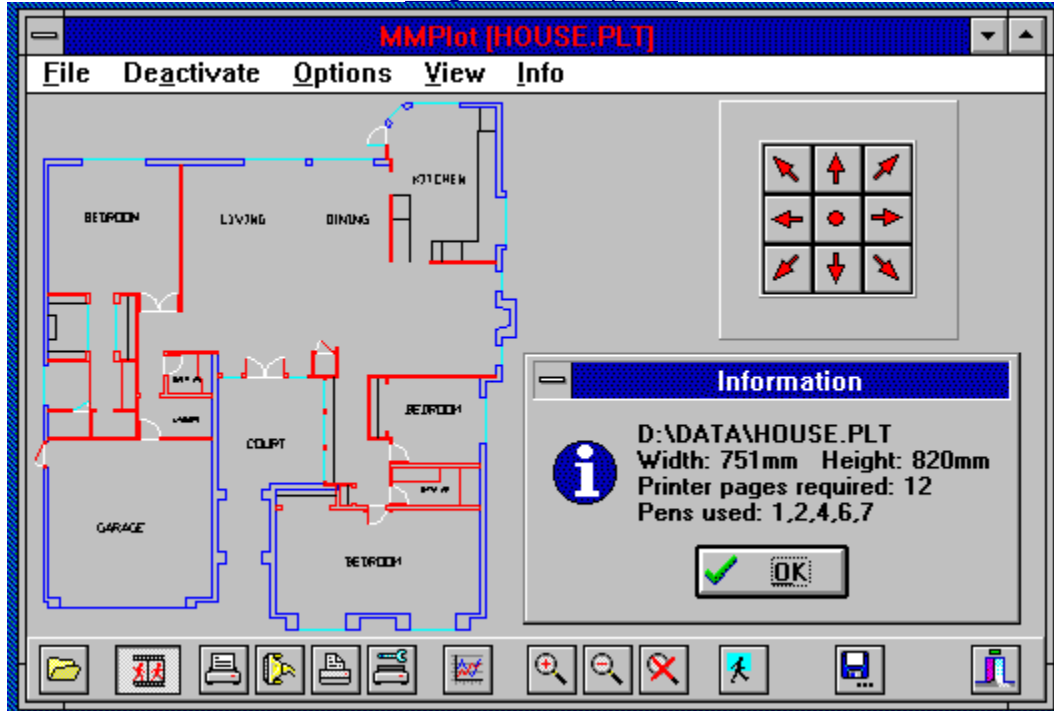
See the overview of the [Viewer CommandsMouse and display](#)

[Keyboard](#)

Viewer Commands

Click the part of the Viewer window you want to know more about.

For more Information see the [Program Description](#)



Shortcuts

Insert does a Zoom IN, **Del.** zooms out, **Home** will cause a Zoom All.

Using **Alt+Cursor** the draft can be rotated into the desired direction.

Use the **cursor** keys to pan the picture.

The **Esc** key deactivates the window refresh

Enter or **Return** will force a repaint and activate the display.

Ctrl+C will copy the display to clipboard as bitmap.

Inifiles

Mmplot will **not** change system files as Win.ini or System.ini

MMPlot.INI will be generated automatically in the programs directory, in case of a network licence. All other configurations create MMPlot.INI in the Windows directory.

Using custom inifiles in the command line: if a full path is not specified the program will try to generate the inifile in the current directory, which is not necessarily the directory of a plotfile specified in the same command line (see below), but either the working directory, if specified, or the programs directory.

The following command lines are also possible:

```
mmplot.exe f:\draft\house.plt *.ini  
or  
mmplot.exe *.ini f:\draft\house.plt
```

which is equal to

```
mmplot.exe f:\draft\house.plt f:\draft\house.ini
```

Runstring Parameters

A configuration file can be specified which is specified by the file extension: INI

A Datasourcefile can be specified. The extensions DAT and TMP are reserved for MMPlot Metafiles. Any other extension will be interpreted as plotfile.

/L This commandline option is used to extract Labels from a Plotfile and store them as ASCII textfile. With this option a datasourcefile must be specified..

`mmplot.exe /L f:\draft\house.plt`

will store the labels in the file f:\draft\house.txt

or

`mmplot.exe /L f:\draft\house.plt c:\tmp\browse.txt`

Settings

All Settings can be saved in the inifile.

Pen Colors are stored as constants or Hexvalues in the inifile.

Constants which are quite similar to System Colors are:

clAqua, clBlack, clBlue, clDkGray, clFuchsia, clGray, clGreen, clLime, clLtGray, clMaroon, clNavy, clOlive, clPurple, clRed, clSilver, clTeal, clWhite and clYellow.

Constants which represent the Windows Colors are:

clActiveBorder, clActiveCaption, clAppWorkSpace, clBackground, clBtnFace, clBtnHighlight, clBtnShadow, clBtnText, clCaptionText, clGrayText, clHighlight, clHighlightText, clInactiveBorder, clInactiveCaption, clInactiveCaptionText, clMenu, clMenuText, clScrollBar, clWindow, clWindowFrame and clWindowText.

You can specify Colors as 4byte Hexvalue instead of using a constant, The 3 low bytes represent RGB intensity for blue, green and red. The Value \$00FF0000 represents highest intensity, pure blue, \$0000FF00 is pure green and \$000000FF is pure red. \$00000000 is black and \$00FFFFFF is white.

Desktop

Save settings on exit

All Settings will be saved to the inifile on ending the program.

Save palette

Also actual palette will be saved.

Save position

Actual windows position and size will also be saved.

Show Speedbar

Show navigator

Show hints

Automatic stretching

Will not work in Zoom or Pan. On resizing the window draft will be resized and refreshed.

Preview Pageframes

Shows a preview of the paging if printed scaled.

<-- = Pan Right

Toggle Cursor Key behaviour. If checked, Left Arrow key performs right panning.

Zoom %

Percentage of window diameter will be used for Zoom-In/Out.

Pan %

Percentage of window diameter will be used for panning.

Save now

Standard

Sets all settings on this page to default values.

Startup

Isotropic

If checked, aspect-ratio is maintained, otherwise the draft will be fit into the windows client area.

Autosize (Window)

Windows dimensions will be tried to fit to the plot dimension in isotropic mode. This will work properly only with a topleft alignment (Print section).

Active

If checked, the program expects a valid filename in runstring or will prompt.

Window

Orientation

Information

Operating System and actual infile

Pens

Colours 1..255 & background

Pen colours and background colour can be changed. Doubleclick on the coloured panels to select from palette. The spinbutton in the lower left corner selects the appropriate pen

Fill density

Fill density used for percent fill can be corrected.

Zoom Width

Pen width will be zoomed. Please note that linestyles other than solid are only supported for a linewidth of 1 pixel (see below).

Width

Pen Width can be adjusted by a factor. The default value is a factor of 4 -> $0.25 * 4 = 1$ Pixel. Please note that Windows will only display dashed and dotted lines if they have a width of one Pixel. To determine that all lines have that width, you should enter a value of **0**.

Set width individually

Pen Widths can be overridden and adjusted individually for each pen. Select Pen 1..255 on the spinbutton on the left

ACAD

Sets pens 1 to 9 to common AutoCAD default colours

Plot

Reloads the palette defined in the plot (if any)

INI

Loads the palette saved in the inifile

Standard

Loads the default system palette and sets all other options to default values.

Print

Fill density

Fill density used for percent fill can be corrected.

Size Font

If checked, the program will try to scale the font. The scaling factor can be adjusted.

Alignment

The alignment is applied in isotropic mode. According to these settings the draft will be positioned within the Window.

Pagenumbers

Print pagenumbers onto the sheets while printing original scale.

Print black

Just use black pen for printing.

Print to Scale

Scaled output can be shrunk in a fixed relation.

Standard

Sets all settings on this page to default values.

Font

Performs a font-selection-dialog to change the used font. The font information will not be saved in the inifile.

Ports

[Copy to](#)

Here you can specify a path to copy the HPGL-File to. You can also copy to ports (not NT16).

[Send direct](#)

OpenComm und WriteComm are used to plot to one of the available ports.

[Portlist and Settings for baudrate, databits, parity, stopbits and flow control.](#)

Please adjust the appropriate settings for your Plotter- or HPGL/2 Printerport.

[Scan](#)

Rescans for available ports.

About

Informations about author, product, licence, copyright and the current revision.

Kill DLL

Symptom : It is not possible to load a plotfile even if it is known to be readable by mmplot.

Solution :

Press this button. This will unload mmplot16.dll or mmplot32.dll from memory and reloads it **once**. This function is needed only in the rare case that the dll is still loaded but in an unstable or paused state.

Caution :

All other instances of the MMPlot program will have a problem because their instance handle of the DLL is invalidated.

Support

Most HPGL/2 instructions are implemented.

If there are still problems with a plotfile, please:

- a) print or plot it, to be sure it is a plotfile
- b) send me the shortest file with this problem
- c) please try to send format A4 or A3
- d) information about the creation-program and plotter-driver

Please report all bugs, suggestions, and problems to:

Compuserve ID : 100335,430
Internet Adresse: 100335.430@CompuServe.com

For Borland Delphi Programmers a TMMPlot.Component is available to include the features of MMPlot in your own Applications !

MMPlot.DLL is available as import filter for your application.

A 32-Bit Version of MMPlot.Viewer for NT/95 is available as Beta version.

Please email if you need more information.

The following lists contain HPGL/2 Instructions supported by MMPlot

A description can be found in "HP-GL/2 Reference Guide, A Handbook for Program Developers" by HP, published by Addison-Wesley 1990.

HP-GL/2 - instructions supported by MMPlot are typed **bold**.

HP-GL/2 includes the former HP-GL/1.

Menu **File**

Open

Save

Copy

Print

Send

Hardcopy

Print Setup

Menu **View**
Zoom
Rotation
(An)Isotropic

Menu **Info**

Info|Help invokes this file

Keyboard

Plot

File|Open

Opens the open file dialog to load a draft from plotfile or mmplot meta file

File|Save

Opens the common savedialog to save the draft as bitmap, windows meta file or mmpot meta file

File|Copy

Copies the contents of the window as bitmap or metafile to the clipboard

File|Send Mail

Attaches the contents of the window as bitmap or metafile or the original plotfile to a mail message and opens the MS-Send-Mail Dialog.

File|Print 1:N

Prints the draft scaled on a windows printer or fax

File|Send to plotter

Sends the draft to a port or file as determined in the settings.

File|Hardcopy

Prints the contents of the window to a windows printer or fax

File|Printer Setup

Opens the common printer setup dialog

File|Exit
See you next time

(De)activate

Pauses/enables the window refresh

Menu **Options**

Opens the Settings dialog

Desktop

Startup

Pens

Ports

Print

About

View|Zoom

Zooms in/out/all as determined in the settings

View |Rotation

Orientation of the plot can be determined

View |(An)Isotropic
Switches the mappingmode

Info|Plot

Some information about the selected plot can be retrieved.
for example:

D:\DATA\HOUSE.PLT

Width: 751mm Height: 820 mm

Printpages required: 12

Shrunk: 1:1

Used Pens: 1,2,4,6,7

Navigator

This nice 8-way navigator can be used to pan without the help of the keyboard

Display

.Use the left mousebutton to open a zoom-rectangle.

"Zoom all" is invoked by pressing the right mousebutton

DF = DeFault Values
IN = Initialize
IP = InPut P1 and P2
IR = Input Relative P1 and P2
***IW** = Input Window
***PG** = advance full PaGe
RO = ROtate coordinate system
***RP** = Replot

Vector Group

3 of 9

AA = Arc Absolute

AR = Arc Relative

AT = Arc three point

CI = Circel

PA = Plot Absolut

PD = Pen Down

PE = Polyline Encoded

PR = Plot Relative

PU = Pen Up

RT = Relative arc Three point

Polygon Group

4 of 9

ER = Edge Rectangel relative
EA = Edge rectangel Absolute
EW = Edge Wedge
EP = Edge Polygon
FP = Fill Polygon
PM = Polygon Mode
RA = fill Rectangle Absolute
RR = fill Rectangle Relative
WG = fill WedGe

***AC** = Anchor Corner

FT = Fill Type Fill type,spacing is emulated by pattern fill

***LA** = Line Attributes

LT = Line Type

PW = Pen Width

***RF** = Raster Fill definition

SM = Symbol Mode

SP = Select Pen

***UL** = Userdefined Line Type

***WU** = pen Width Unit selection

Character Group Instructions

6 of 9

- ***AD** = Alternate font Definition
- ***SD** = Standard font Definition
- ***CF** = Character Fill Mode
- CP** = Character Plot
- DI** = absolute Direction
- ***DR** = Relative Direction
- DT** = Define Label Terminator
- ***DV** = Define Variable text path
- ***ES** = Extra Space
- LB** = LaBel
- ***LO** = Label Origin
- ***SA** = Select Alternate font
- SI** = absolute Character Size
- ***SL** = character SLant
- SR** = Relative character Size
- ***SS** = Select Standard font
- ***TD** = Transparent Data

- BP** = Begin Plot
- ***CT** = Chord Tolerance
- ***DL** = DownLoad character
- ***EC** = Enable Cutter
- ***FR** = FRame advance
- ***MC** = Merge Control
- ***MG** = Message
- ***MT** = Media Type
- ***NR** = Not Ready
- ***OE** = Output ERROR
- ***OH** = Output Hardclip limits
- ***OP** = Output P1 and p2
- ***OS** = Output Status
- PS** = PlotSize
- ***QL** = Quality Level
- ***ST** = SorT
- ***VS** = Velocity Select

Palette Extension

8 of 9

***CR** = Set Color Range for relative color data

NP = Number of Pens up to 255 different Pens

PC = Pen Color Assignment

***SV** = Screened Vectors

TR = Transparency Mode

Miscellaneous

9 of 9

TL = Tick Length

XT = Xaxis Tick

YT = Yaxis Tick

REGISTRATION FORM

MAMAVISION Software Consult

Make Check or money order payable to:

MAMAVISION Software Consult
M.Mayer
Wollmatingerstr. 70B
D-78467 Konstanz

Company Name_____

Name_____

Address_____

Phone Number_____

City_____

State_____

Zip_____

CIS (if available)_____save S/H fee !

MMPLOT 16bit___ 32bit___ Language_____

I would like to register

___copy(ies)of MMPLOT Viewer \$45.00 for a total of \$_____

___Kopien von MMPLOT Viewer DM 65,- für insgesamt DM_____

+ \$8/DM 10,- for Shipping/Handling if no CIS account available

Shareware, Copyright, License, Warranty

MMPlot Copyright © 1995-1996 by MAMAVISION Software Consult
All rights reserved.

License Agreement

You should carefully read the following terms and conditions before using this software. Unless you have a different license agreement signed by MAMAVISION your use of this software indicates your acceptance of this license agreement and warranty.

Shareware Version Evaluation and Registration

This is not free software. You are hereby licensed to use this software for evaluation purposes without charge for a period of 21 days. If you find this software useful please register. If you use this software after the 21 day evaluation period a registration fee of \$45 is required. Payments must be in US dollars drawn on a US bank, and should be sent to MAMAVision Software Consult, Wollmatingerstr.70b, D-78467 Konstanz. Credit card ordering and quantity discounts are available, as described in the Registration Section and on the Order Form. When payment is received you will be sent a registered copy of the latest version of MMPlot.

Unregistered use of MMPlot after the 21-day evaluation period is in violation of German and international copyright laws.

Distribution

Provided that you verify that you are distributing the Shareware Version (select About from the MMPlot Settings menu to check) you are hereby licensed to make as many copies of the Shareware version of this software and documentation as you wish; give exact copies of the original Shareware version to anyone; and distribute the Shareware version of the software and documentation in its unmodified form via electronic means. There is no charge for any of the above.

You are specifically prohibited from charging, or requesting donations, for any such copies, however made; and from distributing the software and/or documentation with other products (commercial or otherwise) without prior written permission, with one exception: Disk Vendors approved by the Association of Shareware Professionals are permitted to redistribute MMPlot, subject to the conditions in this license, without specific written permission.

Registered Version

One registered copy of MMPlot may either be used by a single person who uses the software personally on one or more computers, or installed on a single workstation used nonsimultaneously by multiple people, but not both.

You may access the registered version of MMPlot through a network, provided that you have obtained individual licenses for the software covering all workstations that will access the software through the network. For instance, if 8 different workstations will access MMPlot on the network, each workstation must have its own MMPlot license, regardless of whether they use MMPlot at different times or concurrently.

Governing Law

This agreement shall be governed by the laws of the Federal Republic of Germany.

Disclaimer of Warranty

THIS SOFTWARE AND THE ACCOMPANYING FILES ARE SOLD "AS IS" AND WITHOUT WARRANTIES AS TO PERFORMANCE OF MERCHANTABILITY OR ANY OTHER WARRANTIES

WHETHER EXPRESSED OR IMPLIED. Because of the various hardware and software environments into which MMPlot may be put, NO WARRANTY OF FITNESS FOR A PARTICULAR PURPOSE IS OFFERED.

Good data processing procedure dictates that any program be thoroughly tested with non-critical data before relying on it. The user must assume the entire risk of using the program. ANY LIABILITY OF THE SELLER WILL BE LIMITED EXCLUSIVELY TO PRODUCT REPLACEMENT OR REFUND OF PURCHASE PRICE.

Registration

Benefits of registration

Only registered users will be supported with problems concerning particular file formats.
On registration you receive the newest revision of the package.
The non-registered viewer shows a reminder message from time to time.

How to register

Registration fee for a desktop licence is \$45.00(65,-DM) + \$8(10.-DM) S/H.
Registration for a network licence (unlimited users) we consider to be worth \$900.00(1.300,-DM).
16 and 32 bit Versions have to be registered and paid separately.
Please send it together with the **registration form** to:

MAMAVISION Software Consult
Wollmatingerstr. 70B
D78467 Konstanz

CompuServe users can register MMPLOT by typing GO SWREG 9835 at any CompuServe prompt.
For 32bit version GO SWREG 11278.

You can save the \$8 (10.-DM) shipping fee by specifying a CompuServe account to have your control sent to instead of by mail.

